



THE EVERETT

BY TM GRACE BUILDERS // \$1,950,000

2860 HIDDEN DEN COURT

6 BED, 5 BATH, 4,250 FINISHED SQFT

Old traditions get new meanings with the Everett custom home design at Fox Hill! This charming classic farmhouse with wrap-around front porch, buttercream yellow and grey exterior is a timeless yet innovative design with no detail left undone. A 2020 Fox Hill Custom Showcase Home, the Everett features a custom attached multigenerational suite with kitchen, living spaces and separate entry provides seamless living opportunities yet keeping privacy in mind.

A true custom design-build by TM Grace Builders, Inc., the Everett features 6 bedrooms, 5 bathrooms, 2 laundry rooms, mainfloor study/secondary bedroom, a main floor master suite with details and intrigue wrapped into a methodically designed cozy and custom home. Enter the home and be greeted by a formal dining room with views of the front range, a custom kitchen with luxury Dacor appliances including a built-in wine dispenser, an open-air, yet private courtyard with folding doors and firepit, and a two-story family room with a floor-to-ceiling fireplace – a true indoor and outdoor living experience! The main floor master suite is welcomed by a private entrance with a vaulted ceiling, five-piece master bath and spacious walk-in closet and French doors to the outdoor courtyard. Upstairs, a bright and cheerful loft, three bedrooms, 2 bathrooms, and separate laundry has been designed to maximize the views that Fox Hill offers. Enter the multi-generational suite through the breezeway connection and private door and separate exterior entry and enjoy the endless opportunities with an entirely separate living suite complete with kitchen, 3/4 bath, living room, and bedroom. Don't forget about the 9' garage doors in the 4-car garage!

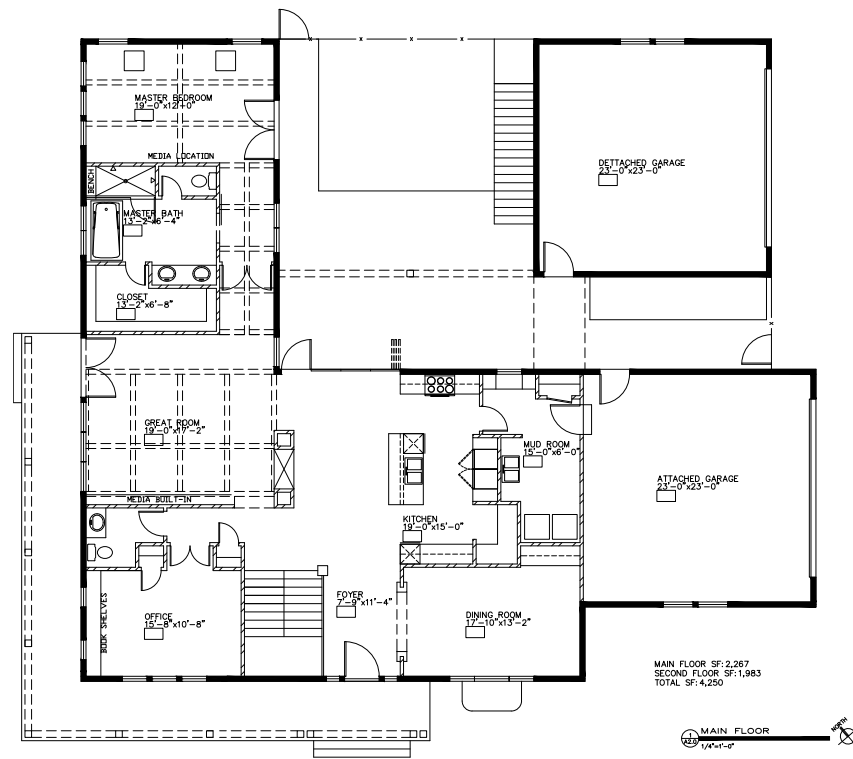
This timeless classic design has taken on a new twist with the charming tile and lighting selections throughout and built with the Fox Hill farm-to-table lifestyle in mind. This home is positioned on a corner lot of a cul-de-sac on 1.6 acres and will come fully landscaped. A turnkey home, the Everett is a true masterpiece!



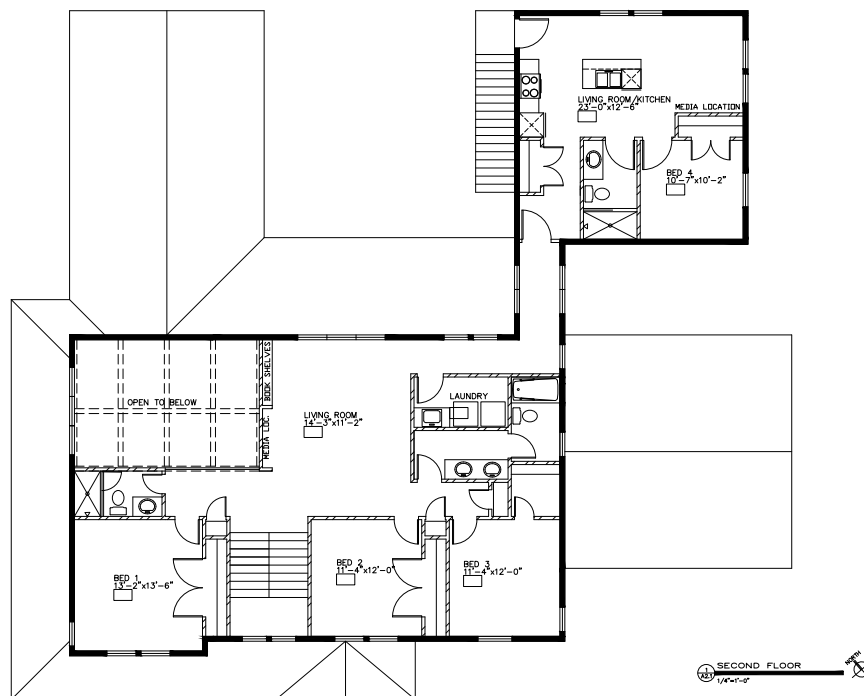
3/30/20

Exclusively marketed by The McLaughlin Team, Doug and Paige McLaughlin
RE/MAX Alliance 303.620.6677 | info@liveinfoxhill.com | www.liveinfoxhill.com

FOX HILL



MAIN LEVEL // 2267 SQFT FINISHED



UPPER LEVEL // 1983 SQFT FINISHED