



**SHADOW CREEK**  
**BY CAMERATA HOMES**

4 BED, 5 BATH // 4,839 FINISHED SQFT

Welcome to the Shadow Creek, designed and built by Camerata Homes - a stunning custom home nestled on 1.5 acres of serene open space and anchored by unobstructed mountain views.

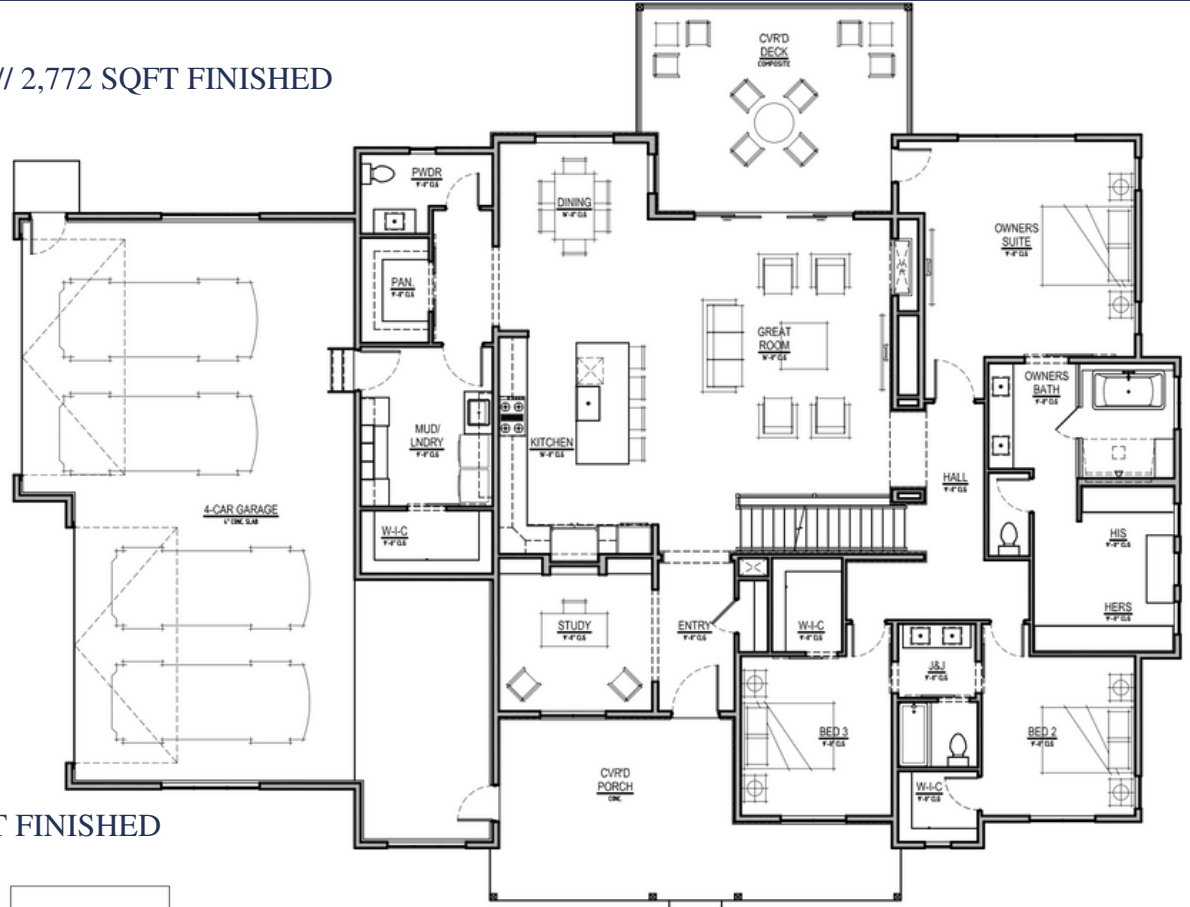
This moody and modern retreat boasts sleek yet cozy features including a vaulted great room and open concept kitchen, dedicated office, and outdoor covered dining and entertaining space. The bright kitchen boasts luxury appliances, pot filler, dual toned cabinetry, a walk-in pantry with ample storage, and a main floor laundry and "CostCo" closet for maximum storage. The main floor primary suite offers a peaceful oasis with beautiful views, outdoor access, and a luxurious en-suite bath with a "wet room" tub and shower concept and heated floors. Two secondary bedrooms complete the main floor with a full connecting bath and walk-in closets. Upstairs, a versatile loft provides a great space to work or play, ideal for a second office space, library and more!

As you descend the stairs to the basement, you are greeted by a wet bar complete with two beverage/wine fridges, sink and dishwasher, and a beautifully appointed wine cellar. The spacious recreation and family rooms provide plenty of space for relaxation and leisure activities, along with direct access to the exterior entertainment space. Whether you want to watch a movie with the family or host a game night with friends, this area has everything you need for hours of fun and enjoyment. A spacious bedroom ensuite, which is ideal for guests or family members who desire a private and comfortable living space has direct access to a second laundry closet. With immediate outdoor access, walk in closet and ensuite 3/4 bathroom, this bedroom suite offers a sense of independence and flexibility, making it perfect for multigenerational living scenarios. The basement of this home is a luxurious and versatile space that is sure to impress and accommodate a variety of needs and lifestyles.

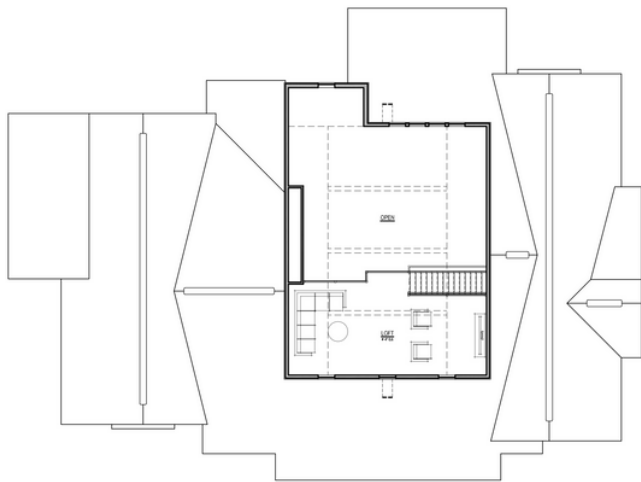
With its prime location, luxurious amenities, 1G of fiberoptic technology, and stylish design, this home is the perfect blend of comfort and sophistication. Don't miss your chance to make this dream home yours.

# CAMERATA HOMES AT FOX HILL

MAIN LEVEL // 2,772 SQFT FINISHED



UPPER LOFT // 440 SQFT FINISHED



LOWER LEVEL // 1,627 SQFT FINISHED

