



THE GRANITE SHOAL
BY GMC CONSTRUCTION CO
3 BED, 4 BATH // 3,801 SQFT*

“The Granite Shoal” by GMC Construction Co is a magnificent custom home, featuring 3 bedrooms, 4 bathrooms, and 3,801 finished square to indulge in. Poised on acreage property, and anchored to take in the Rocky Mountain views, this gorgeous prairie style home with a modern touch has it all!

Upon entering, homeowners are immediately greeted by a dedicated study that is adorned with ample natural light. The foyer is connected to a powder room and provides access to the spacious 3 car garage via the laundry/mud room. The great room is cozy, open and features a fireplace all while connected to the spacious dining area that has a buffet counter and the open-concept kitchen with a spacious island and a butler’s pantry, complete with a sink and dishwasher. Privately tucked behind the butler’s pantry is the entry to the primary suite, which has a vaulted ceiling, a sliding glass door to the covered deck, and the luxurious spa bath with a large walk-in shower, dual vanities, and dual walk-in closet spaces. Finishing off the main floor of the Granite Shoal is the large covered deck, that provides homeowners with exterior entertainment space to enjoy the peaceful and serene views.

Descending into the lower level, homeowners are greeted by a spacious family room, complete with walk-out access to the covered patio, ample windows for natural light, and a quaint walk-up wet bar space for entertainment. A private hallway leads to bedrooms two and three. Bedroom two has access to a private bathroom, while bedroom three has access to a shared bathroom for guests. With an opportunity to build a fourth bedroom and fifth bathroom, the Granite Shoal has large unfinished space that can remain unfinished for storage or can be closed out for more finished space, as needed.

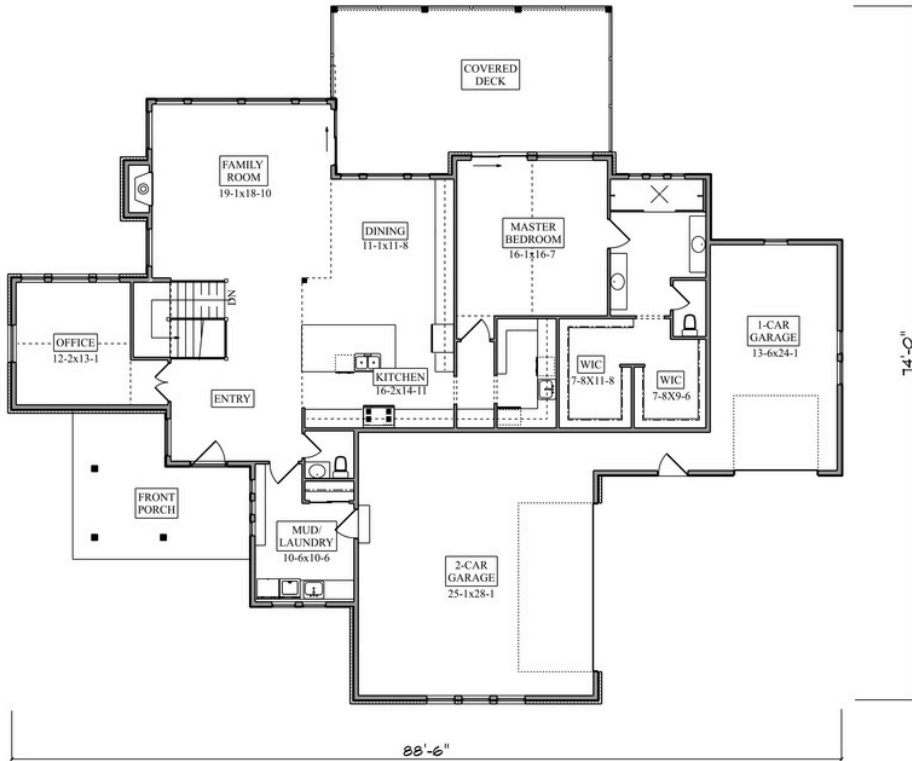
Rounding out the Granite Shoal is the 1G of fiberoptic technology pre-wired for homeowners to indulge in fast technology while enjoying the country lifestyle!



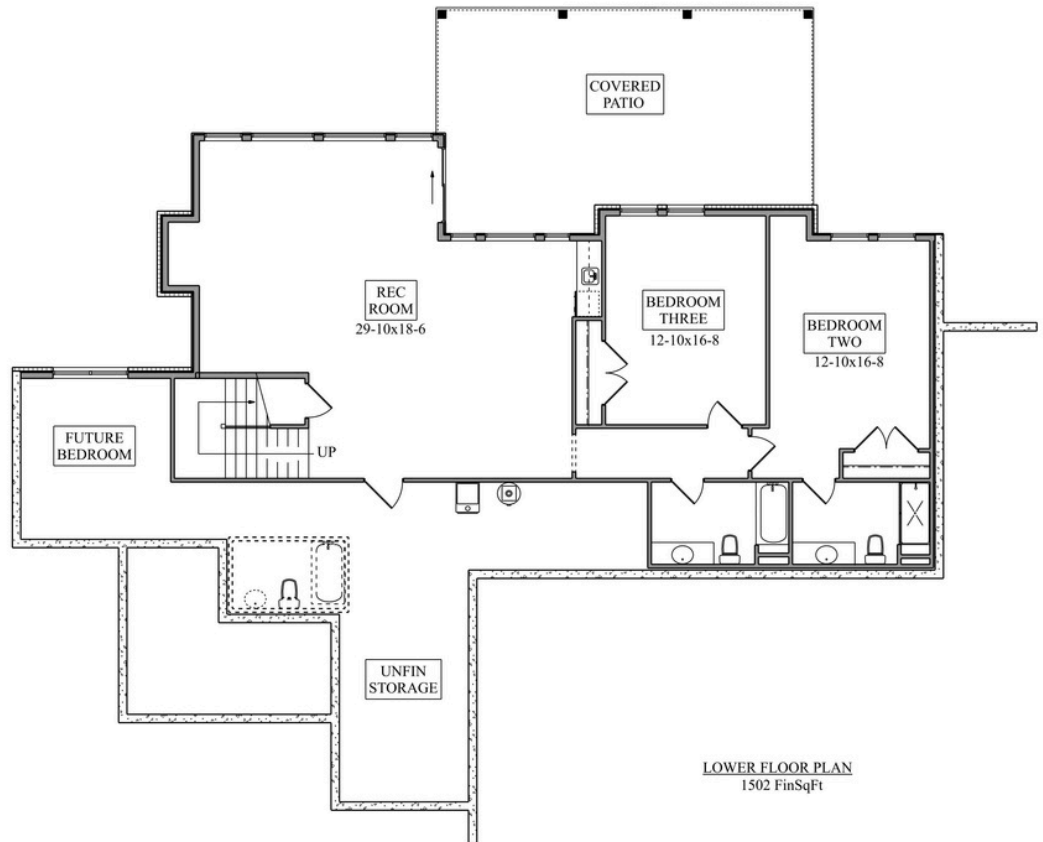
8/6/2024

*Price subject to change // Square footage deemed reliable. Buyer to verify square footage.

GMC CONSTRUCTION CO



MAIN FLOOR PLAN
2299 FinSqFt



LOWER FLOOR PLAN
1502 FinSqFt