



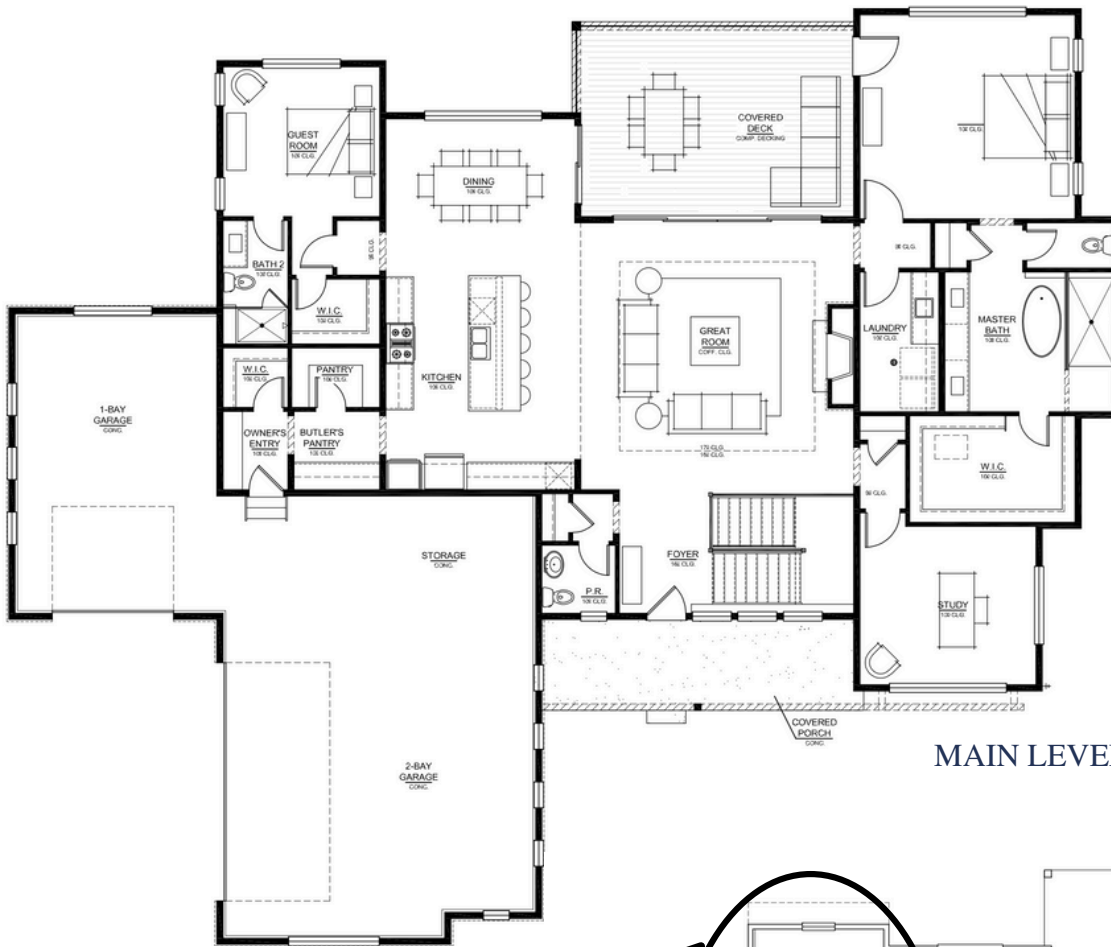
MODERN FARMHOUSE
BY GMC CONSTRUCTION CO
 4 BED, 5 BATH // 4,254 SQFT*

Featuring 4 bedrooms, 5 bathrooms, and 4,254 finished square feet to indulge in, this modern farmhouse with mountain flare custom home by GMC Construction Co is a dream come true. A ranch style home with a walk-out basement, this custom home is poised on acreage property, and anchored to take in the Rocky Mountain views.

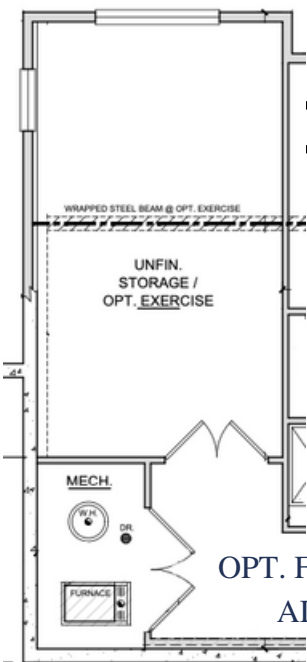
From the extensive covered porch, homeowners are greeted by 15' ceilings and a spacious great room that features a coffered ceiling, fireplace feature, and large sliding glass doors to a covered deck with views of the acreage and Rocky Mountains. Providing a sense of peace, the great room opens to an open-concept kitchen that provides a 36" island with bar seating and a double sink, ample prep room, a large dining space, and a butler's pantry that is connected to the walk-in pantry for storage. Tucked behind the dining space is the private guest room that has a walk-in closet and private en-suite bathroom. Opposite the kitchen and guest suite is the luxurious primary suite that provides natural light, access to the 5-piece spa bath that features a soak tub, large shower, and spacious walk-in closet. Along the hallway to the primary suite is the laundry room for easy access. Rounding out the main level of this modern farmhouse is the spacious dedicated study that has large windows for a great workspace and a 3 car garage that provides storage and workspace.

Descending into the lower level, homeowners are greeted by 9' ceilings and a walk-up wet bar, complete with a sink and a refrigerator for chilled beverages. A spacious family room is complimented with walk-out access to the covered patio and a large fireplace feature. Two private guest bedrooms adorn this lower level, both on opposite sides of the family room. Bedroom three features a walk-in closet and private bathroom, while bedroom four feature a spacious closet and shared bathroom via a hallway for guests. Across bedroom four is a flex space, perfect for a secondary study or a workout room. Completing the lower level is ample unfinished storage and the option to finish some unfinished space for an enclosed exercise room behind bedroom 3.

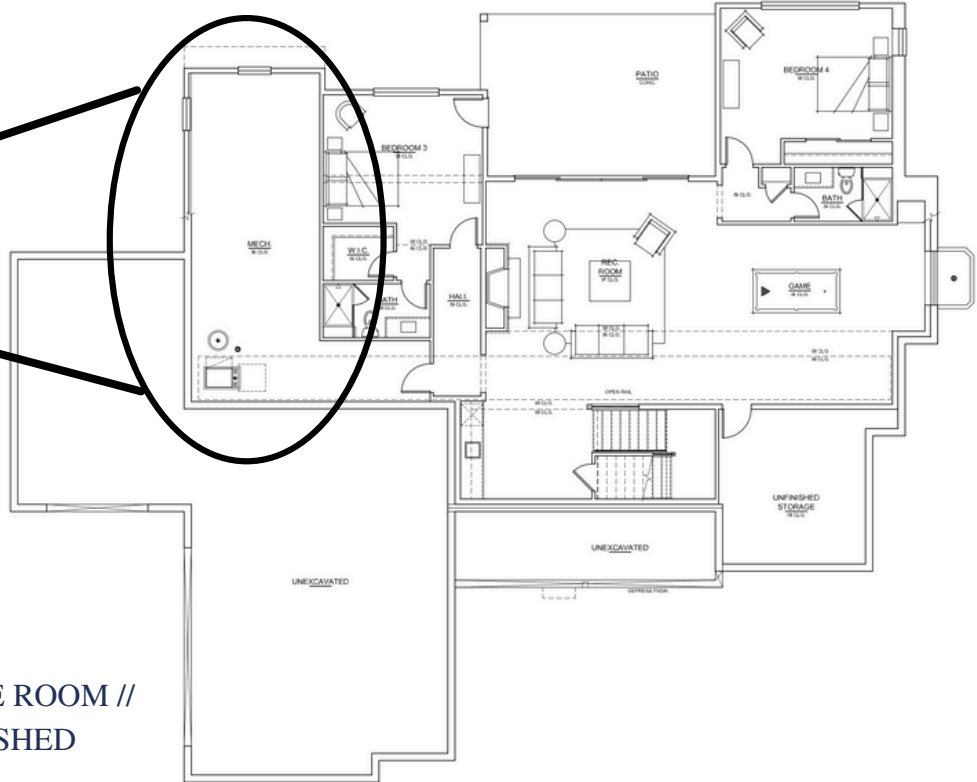
Rounding out this modern farmhouse is the 1G of fiberoptic technology pre-wired for homeowners to indulge in fast technology while enjoying the country lifestyle!



MAIN LEVEL // 2,490 SQFT FINISHED



OPT. FINISHED EXERCISE ROOM //
ADD'L 266 SQFT FINISHED



LOWER LEVEL // 1,764 SQFT FINISHED