



THE CARMITH CIRCLE
BY GMC CONSTRUCTION CO
 4 BED, 5 BATH // 4,023 SQFT*

“The Carmith Circle” by GMC Construction Co is situated on acreage and poised to take in the rolling hills of Douglas County. Featuring 4 bedrooms, 5 bathrooms, and 4,023 finished square feet to indulge in, this custom modern farmhouse provides homeowners with a country lifestyle and luxury living.

A courtyard enclosed by beautiful stonework and an outdoor fireplace feature and a welcoming front porch are the face of The Carmith Circle. Homeowners are greeted by a foyer that has access to a private office enclosed by glass walls. With a vaulted ceiling, the great room provides a cozy space with a fireplace feature and two access points to the covered deck, one of which is through sliding glass doors via the dining room space. An open-concept kitchen completes the great room space that has ample storage, a large island for prep space and entertainment, a large walk-in pantry, and custom cabinetry and countertops. Tucked behind the kitchen space is a hallway, leading to the primary suite, guest en-suite and bedroom with access to the 3-car garage. The primary suite is expansive and has access to the spa bath, with dual vanities and a large walk-in closet. The guest en-suite has a spacious walk-in closet and a private bath. The mud room features the washer and dryer, along with a wash sink and a coat closet. Rounding out the main floor is the spacious 3-car garage that allows for storage and a workspace.

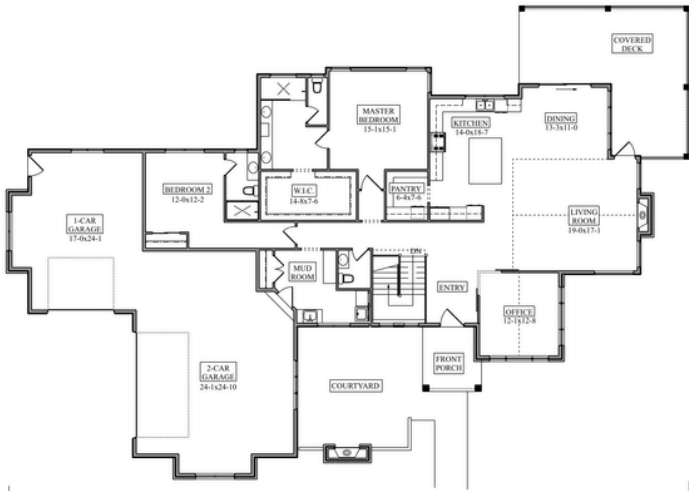
The lower level of the Carmith Circle provides a sanctuary for homeowners. The recreation room is expansive, which allows for homeowners to have plenty of space to entertain and enjoy - space for a pool table, game table, a theatre room, or simple a seating area for visiting, the recreation room allows for many possibilities. There are two bedrooms in the lower level that are both spacious and share a hallway bathroom. There is ample unfinished storage space, and a large unfinished storage area that can be finished out for a fifth bedroom and bathroom.

Rounding out “The Carmith Circle” is the 1G of fiberoptic technology pre-wired for homeowners to indulge in fast technology while enjoying the country lifestyle!

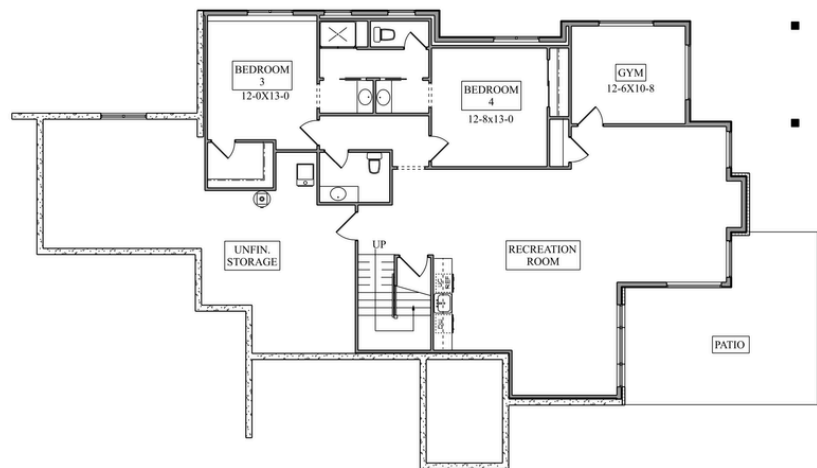


3/21/2026

*Price subject to change // Square footage deemed reliable. Buyer to verify square footage.



MAIN LEVEL // 2,375 SQFT FINISHED



LOWER LEVEL // 1,648 SQFT FINISHED

DESIGN SELECTIONS

