



## **BLUE MESA**

4 BED, 5 BATH // 4,655 FINISHED SQFT

The Blue Mesa, a mountain contemporary style ranch home designed by Godden Sudik Architects, is the perfect forever home in the Fox Hill Community! Appointed on 1.64 acres with rear-facing Rocky Mountain views, The Blue Mesa has so much to offer!

Via the gorgeous front door, guests are welcomed to the foyer of this mountain contemporary home with copious amounts of natural lighting radiating from the spacious great room. The great room offers a luxurious fireplace and access to the exterior entertainment space on the spacious 550+ square foot covered deck that has expansive mountain views. The open-concept kitchen is complete with a large island, ample amounts of counter space, and deluxe appliances. A secluded primary suite provides the homeowners with a coffered ceiling, a large spa bathroom and a lavish walk-in closet. Completing the main floor is a guest en-suite, a dedicated study, and a mud room from the 3-car garage attached to the laundry room.

Entering the lower level of The Blue Mesa, guests are immediately welcomed by 9ft ceilings in the recreation room that is textured with LVT flooring. This open-concept recreation room has a spacious game room option along with an open wet bar with a wine-wall finished with a dry stack silver stone. Completing the lower level is the finished flex room that is pre-wired to either be a theatre room or a workout room, along with two private bedrooms that both have their own spacious walk-in closets and easy access to bathrooms.

With the Fox Hill Community having 1G of fiberoptic technology pre-wired into the home with CenturyLink, The Blue Mesa fits right in to provide a comfortable home for the next home owner!!

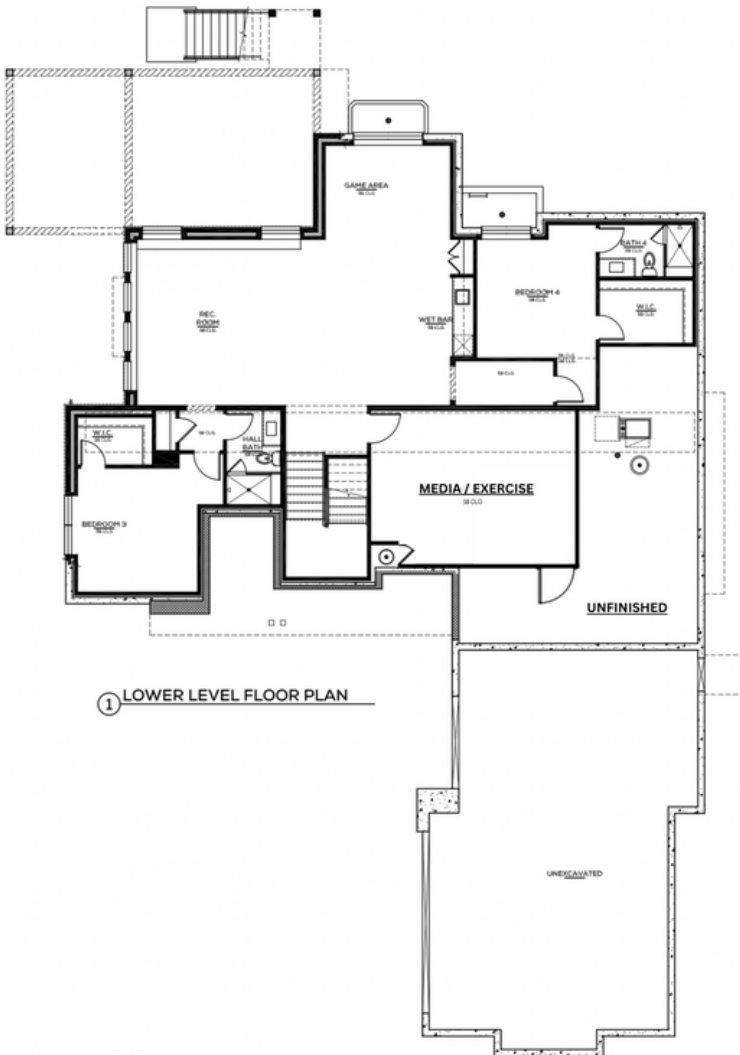


2/15/2024

MAIN LEVEL // 2,586 SQFT FINISHED



① MAIN LEVEL FLOOR PLAN



① LOWER LEVEL FLOOR PLAN

LOWER LEVEL // 2,069 SQFT FINISHED