



THE PEAK VIEW

4 BED, 6 BATH // 6,330 FINISHED SQFT*

Welcome to the epitome of Colorado luxe living in the highly coveted neighborhood of Fox Hill, one of Douglas County's most prized communities. Presenting a unique opportunity to customize and own an exceptional home on the most highly anticipated lot in the community. Poised on over 1.7 acres and anchored by majestic panoramic Front Range and valley views, this stunning residence will showcase the perfect fusion of modern design and the magnificent charm of Colorado living. Featuring innovative Scandinavian-inspired architecture, this home's craftsmanship, seamless design, and intentionality will exceed all expectations.

Customize this home now with a personalized and collaborative process with the builder, or customize a fresh design on this gorgeous homesite. The current home plan offers 4 beds, 6 baths, pivot door entry, exceptional Great Room with 12' vaulted ceilings, Primary Suite with vaulted ceilings & pivot door access, a dedicated study, & all ensuite guest bedrooms. Innovation & intentionality are evident through the sprawling main & lower levels with living and private spaces designed to capture the Front Range view but also experience the view and lifestyle from every angle. Notable design elements include a chef's kitchen with an oversized pantry, serving passthrough area to the outdoor living, kitchen, & dining spaces, opportunity to add a pool onto the on grade patio, walkout access from the lower level game & bar/lounge, a glass enclosed gym and sauna. The oversized four car garage allows for ample space for storage, hobbies and more.

Now is your time to build a home on the most prized homesite in the community. Located minutes from Castle Rock, the heart of Parker, the Denver Tech Center and easy access to DIA and CO Springs Airports, embrace the opportunity to live in Fox Hill and enjoy Colorado luxe living.

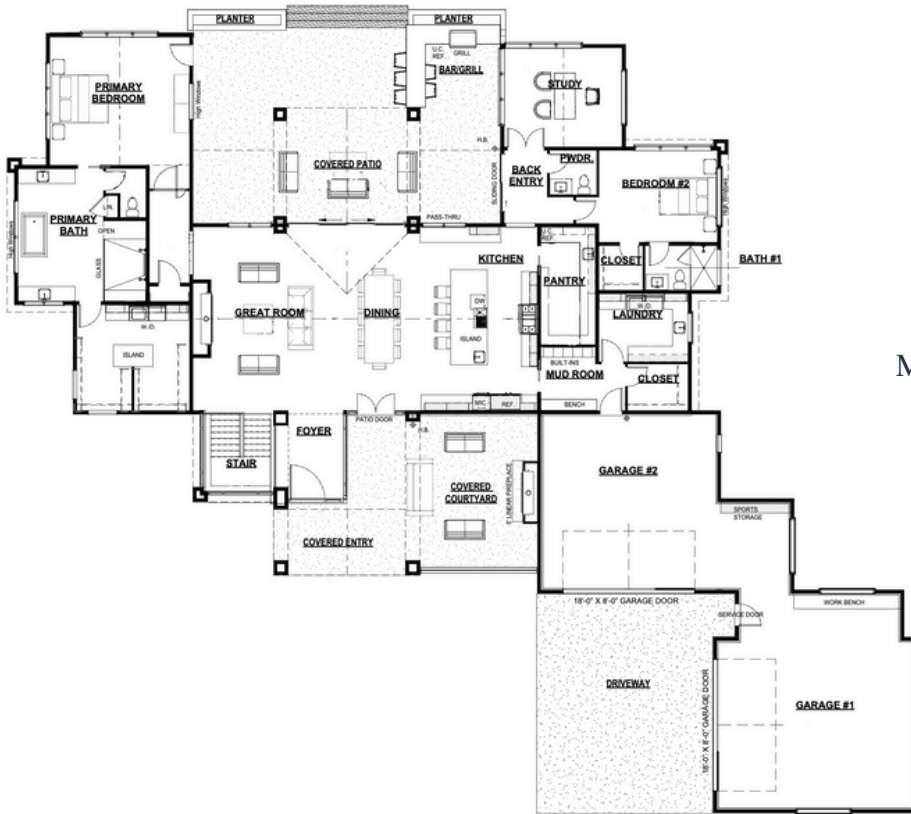


10/23/2024

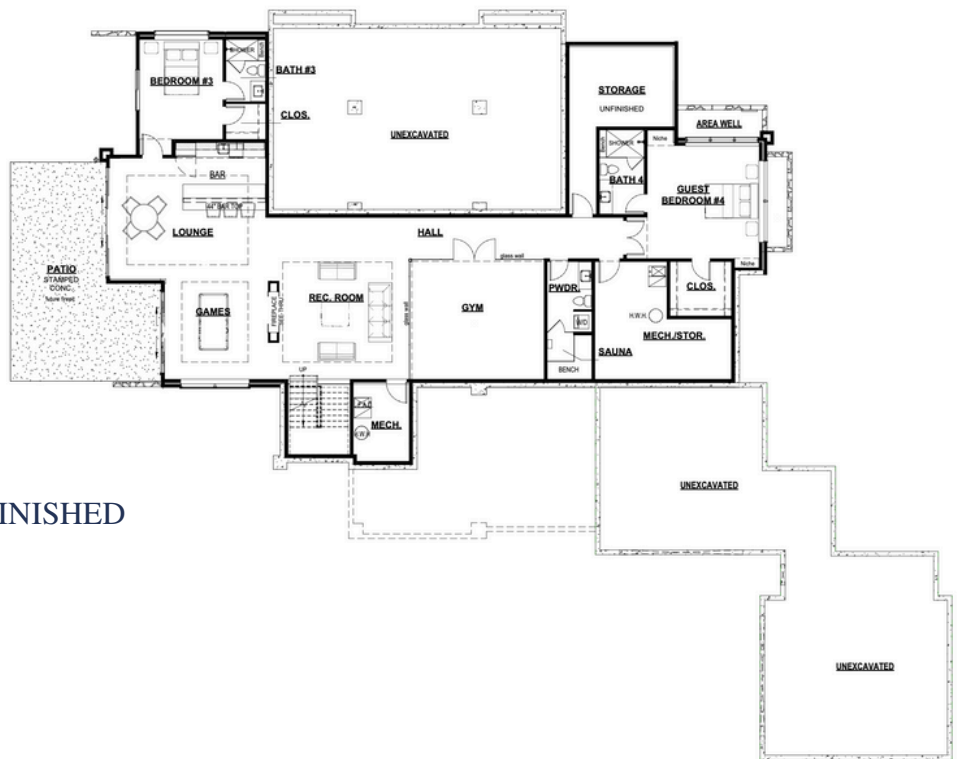
*Square footage information deemed reliable. Buyer to verify square footage.

Exclusively marketed by Paige & Doug McLaughlin
RE/MAX Alliance | 303.620.6677
info@liveinfoxhill.com | www.liveinfoxhill.com

FOX  HILL



MAIN LEVEL // 3,578 SQFT FINISHED



LOWER LEVEL // 2,752 SQFT FINISHED