



## THE PEAK VIEW

4 BED, 6 BATH // 6,330 SQFT\*

### The Peak View: A Sophisticated Ranch-Style Design

Introducing an innovative Scandinavian-inspired architecture poised on 1.76 acres overlooking the sweeping views of the Rocky Mountains. A ranch-style custom home with a walk-out basement comfortably complete with 4 bedrooms, 6 bathrooms, and 6,330 total square feet - this home promises to exceed every expectation with its craftsmanship, intentionality, and luxury.

Contemporary homeowners are welcomed home by a roundabout driveway and a flattering front entry with access to a lounging courtyard that provides comfort with a built-in fireplace. With vaulted ceilings, a stunning fireplace feature and access to the spacious covered deck with a custom outdoor bar / grill space that takes in the sweeping views of the Rocky Mountains, the great room is the perfect place for relaxation and entertainment. The open-concept kitchen provides a connected dining room space, a large kitchen island with a farmhouse sink, custom cabinetry, luxury appliances, a Butler's walk-in pantry, and a pass-through window to the covered deck. Along one side of this contemporary design is a spacious guest en-suite, a private office with French doors, a substantial guest en-suite with a walk-in closet and 3/4 bath, the mudroom with access to the spacious laundry room complete with cabinetry and rinse sink, and the expansive 4 car garage that provide ample storage and work space room. Rounding out the main level is the private primary bedroom, with private access to the covered deck, abundant natural lighting, a luxurious 5-piece spa bath with a large soak tub, and the primary walk-in closet with built-in shelves and a private washer and dryer.

Descending into the lower level, homeowners are greeted by a spacious recreation room with a see-through fireplace feature and a glass enclosed workout space. Entering the lounge area is a full walk-up wet bar, a space for gaming or entertainment, dual access to the stamped concrete covered patio and a private en-suite 3rd bedroom. Along the opposite side of the recreation room is a powder room with access to the \*optional\* sauna room, the 4th en-suite bedroom, and dual storage spaces.

With sweeping views overlooking the rolling hills and the Rocky Mountains, completing this home is the 1G of fiberoptic technology that is pre-wired into the home for the modern homeowner to indulge in. Where country living meets city access - welcome home!

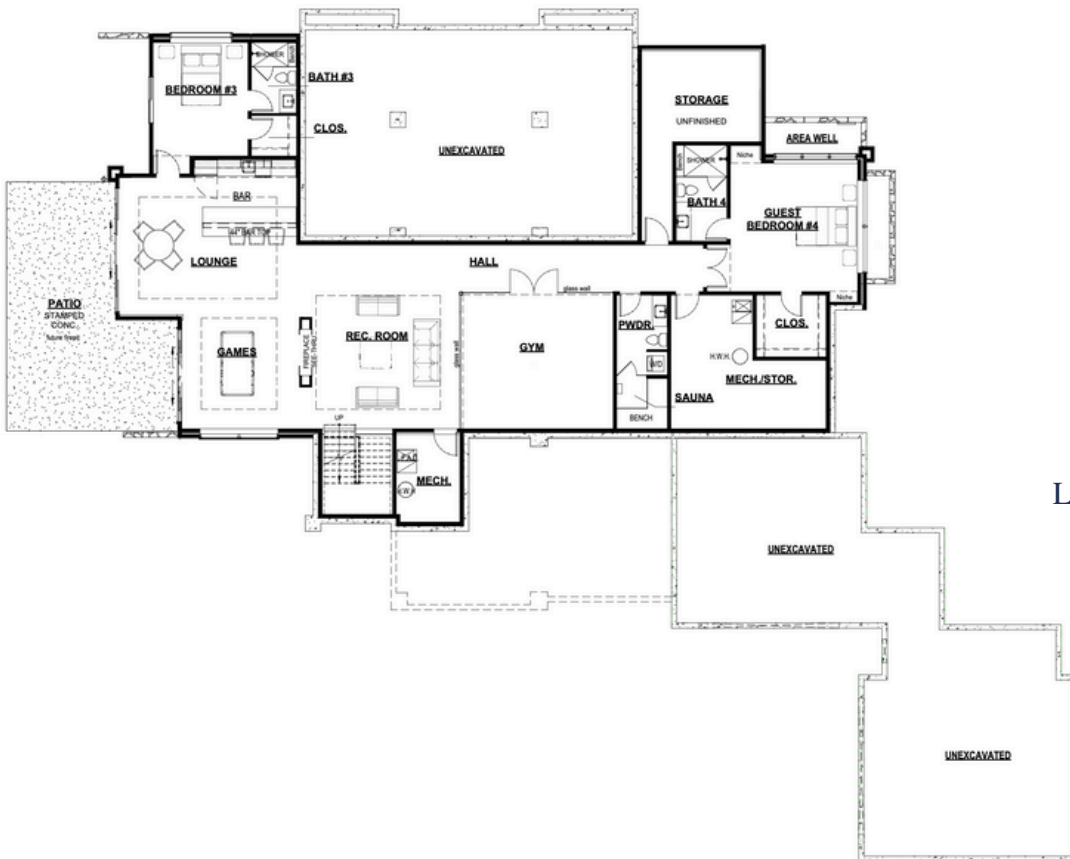
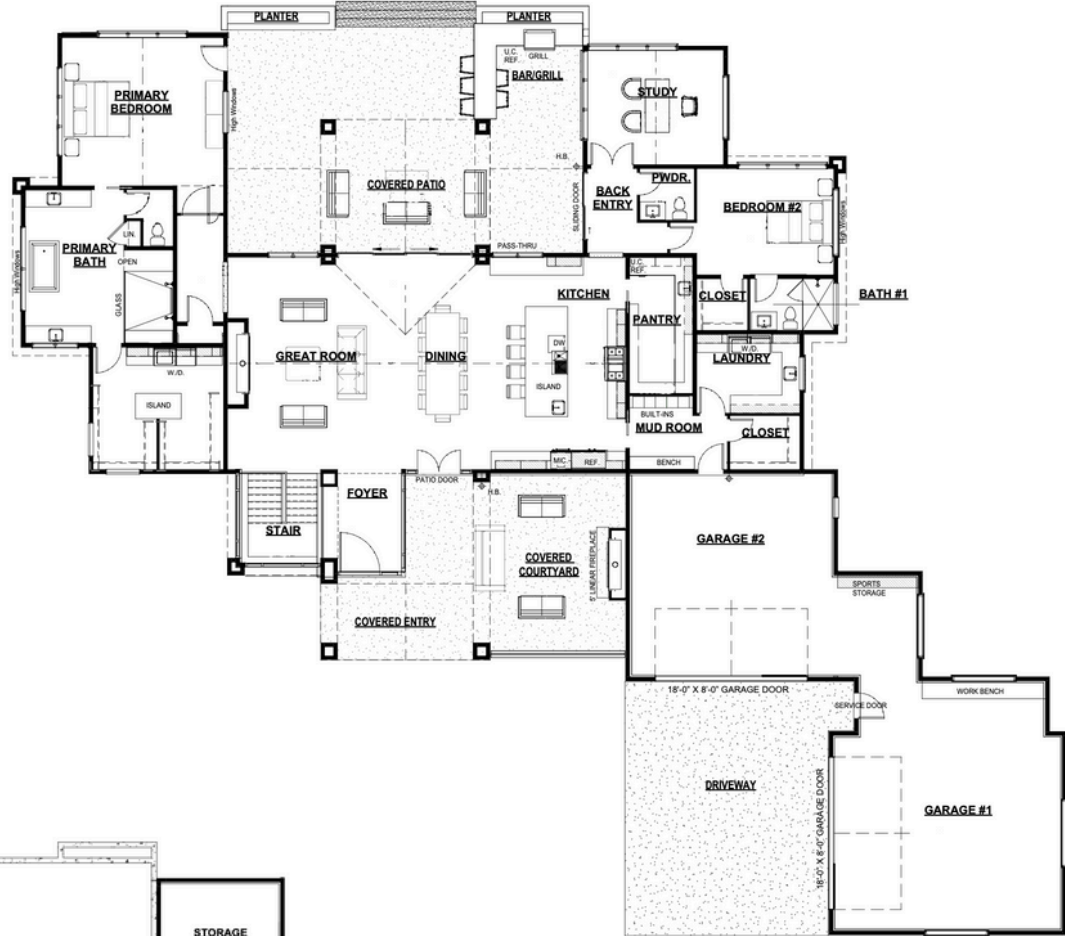


\*Square footage information deemed reliable. Buyer to verify square footage.

1/25/2025

# CUSTOM HOME IN FOX HILL

MAIN LEVEL // 3,578 SQFT



LOWER LEVEL // 2,752 SQFT