



THE BERKLEY ROAD

5 BED, 5 BATH // 4,852 FINISHED SQFT

This modern contemporary style home is outfitted on acreage property that is rear-facing to take in the beautiful Colorado mountain views via a spacious wrap around barrel-roof covered deck. This 5 bed, 5 bath custom home design includes 4,852 finished square feet, and an expansive three car garage, that includes a generous storage area or work space!

The Berkley, accentuated by a spacious front porch, provides a stunning entry into this modern contemporary custom home! Guests are immediately welcomed by 2 guest bedrooms, one of them being an optional study. The open-concept kitchen greets guests as they walk toward the Great Room. Furnished with an expansive island, ample amounts of stunning counter and expressive cabinet space, and luxurious appliances, the open-concept kitchen is completed with a butler's pantry, which provides adequate food storage space. The family room, which has a vaulted ceiling, is centered with a stunning fireplace feature. Behind the great room is the private primary suite, that is completed with a private entrance to the partially covered barrel-deck, a 5-piece spa bathroom, ad a his/hers closet that has quick access to the laundry room. Finishing the main floor, the Berkley provides two expansive outdoor living spaces that are perfect for entertainers.

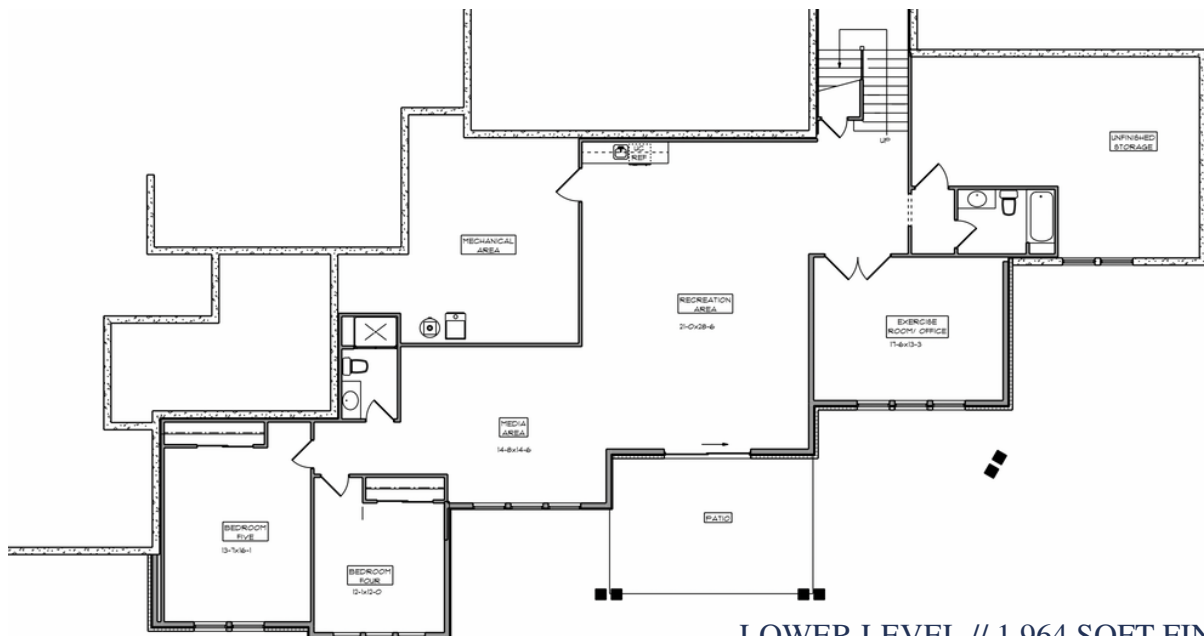
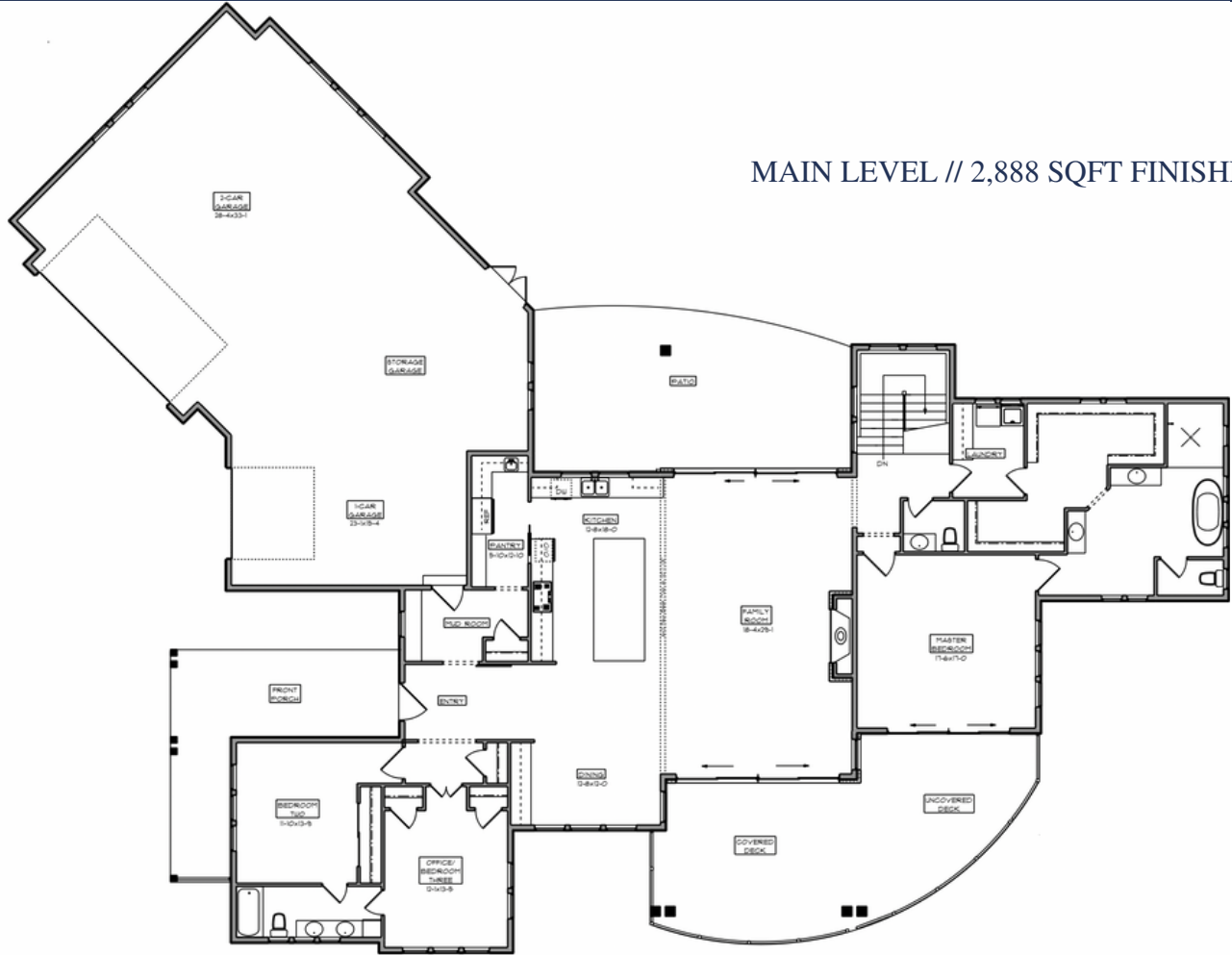
The lower level of this modern contemporary style home immediately welcomes guests to a large, spacious recreation area. With a flex room that could serve as either an exercise room, study, or craft room, the lower level has a lot to offer. With an open-concept, partial wet bar, access to the walk-out covered patio, and two generous sized bedrooms, the lower level of the Berkley provides so many opportunities for the homeowners!

With the Fox Hill wellness driven lifestyle, the Berkley Road is set up to cater to those who are looking to thrive in their future home!



5/2/2023

MAIN LEVEL // 2,888 SQFT FINISHED



LOWER LEVEL // 1,964 SQFT FINISHED