



THE ALPINE VISTA

4 BED, 7 BATH // 5,816 FINISHED SQFT*

A European farmhouse style home with a contemporary twist, The Alpine Vista is appointed on 3 acres and is positioned to take in the picturesque, breath-taking views of the Rocky Mountain range. The 4 bed, 7 bath design includes 5,816 finished square feet, an incredibly spacious four car garage that includes a generous storage area, and ample amounts of exterior entertainment space!

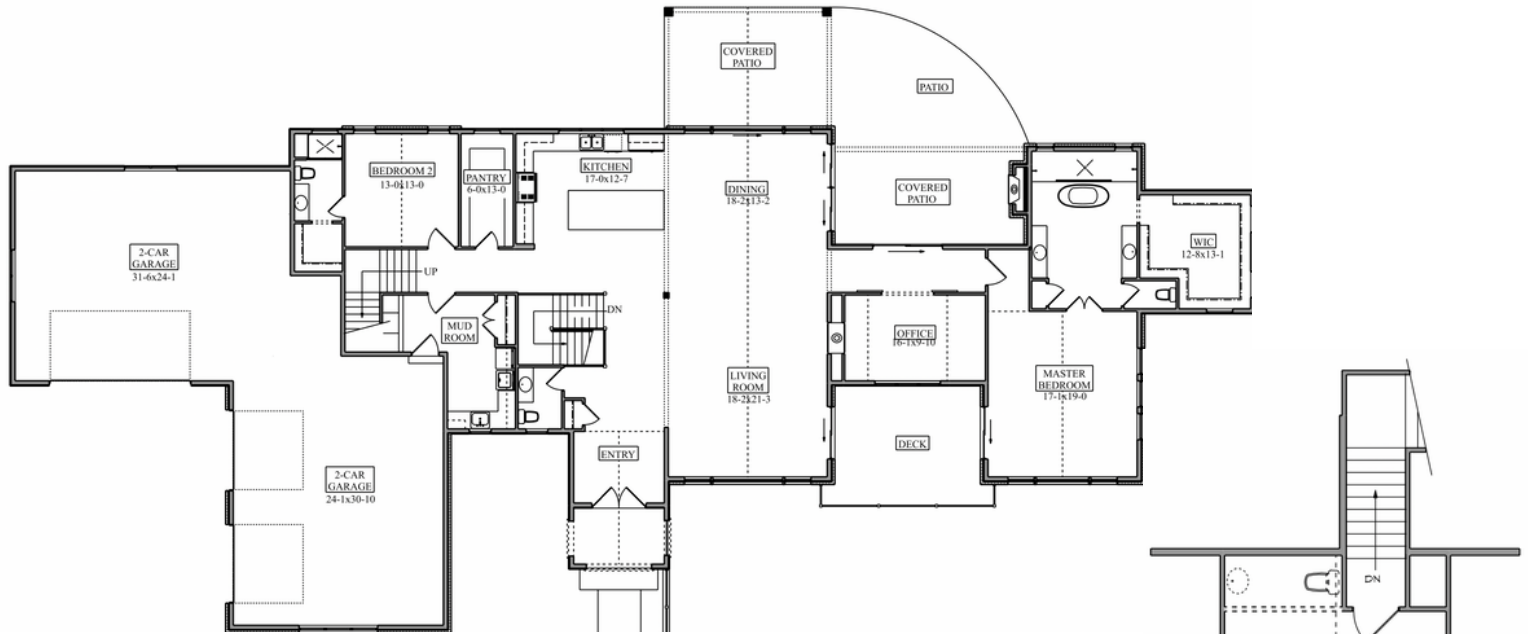
With a welcoming entrance, homeowners are greeted with a spacious foyer and the grand ceilings of the great room. Natural lighting via the spacious windows allow for the living area to be accentuated. With multiple points of access for the curved, wrap-around covered patio, the living room is the perfect entertainer's space! The great room is completed by the expansive kitchen, which has a large kitchen island, luxurious countertops and cabinetry, deluxe appliances, and a large walk-in pantry. Tucked behind the spacious kitchen is the private guest en-suite and access to the mud room and upper bonus level. Opposite the kitchen is a dedicated study with magnificent barn doors. Secluded down a private hallway is the expansive primary bedroom with vaulted ceilings, natural lighting and gorgeous views of the Colorado mountains, a five-piece luxurious spa bathroom and a large walk-in closet. Complete with a private deck with the perfect views of the mountain range, the primary suite is the homeowners dream getaway.

Descending into the lower level of this European farmhouse style home, homeowners are greeted by an incredibly spacious recreational room and media area. The recreation room, complete with a wet bar, is perfect for all of your entertainment purposes! This entertainment space has exclusive access to the grand covered patio, that will provide gorgeous views of the Colorado mountain range. With a dedicated exercise room, and a 3rd & 4th private en-suite bedroom opposite each other, and a planned unfinished space for an optional 5th bedroom, the lower level of The Alpine Vista is the perfect space to escape to. Completed with a gorgeous landscaped yard and open space - this stunning custom home has been intentionally and methodically designed and is ready to enhance your new lifestyle at Fox Hill!



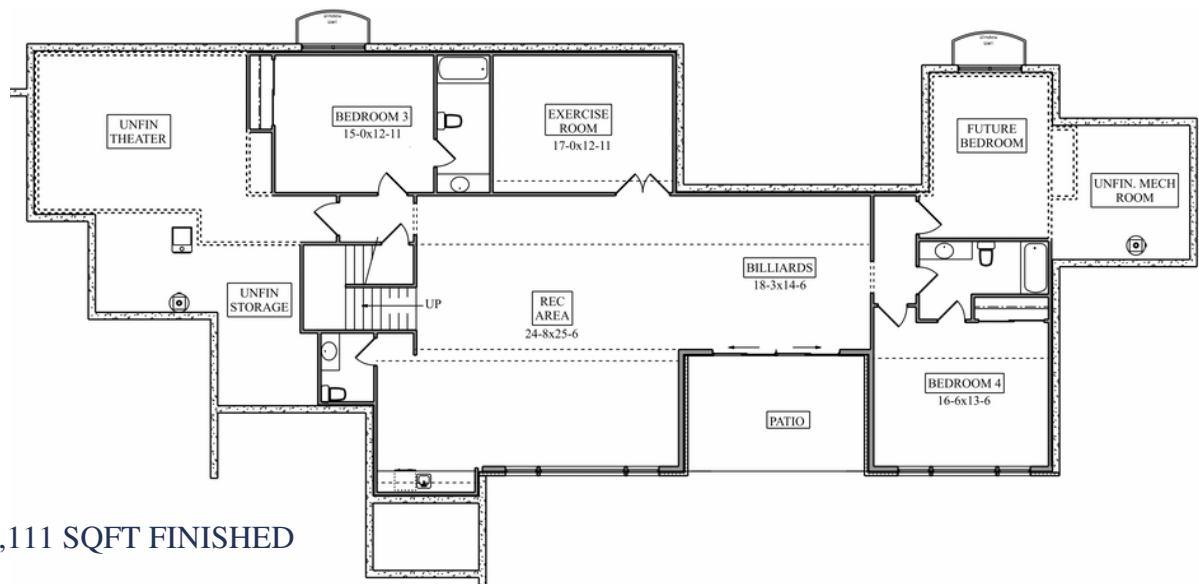
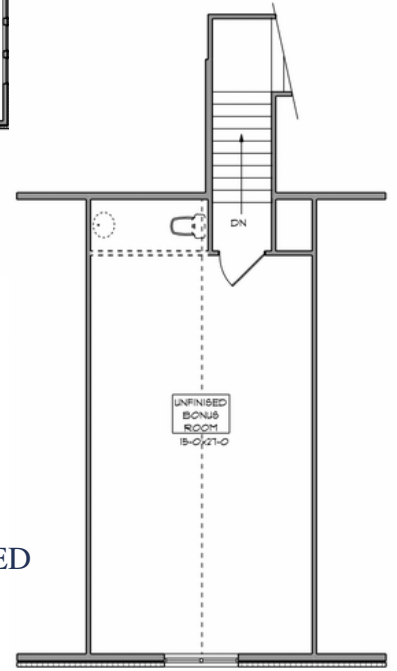
1/31/2023

*Square footage information deemed reliable. Buyer to verify square footage.



MAIN LEVEL // 3,240 SQFT FINISHED

BONUS ROOM // 465 SQFT FINISHED



LOWER LEVEL // 2,111 SQFT FINISHED