



THE MODERN FARMHOUSE BY SHEFFIELD HOMES

4 BED, 4 BATH // 4,182 FINISHED SQFT

\$50,000 Landscaping Credit

This elegant modern farmhouse design is built by Sheffield Homes that is outfitted on 1.89 acres. This home, designed by Godden Sudik Architects, is positioned to back to and enjoy the panoramic unobstructed Front Range views via the covered deck and patio. The expansive 4 car garage is separated by a workshop space that could also be used as storage.

This 4 bed, 4 bath custom home has a double iron door entry that centers you in the home with a designated study and a guest suite off of the front entry. A vaulted expansive foyer leads to a fabulous great room with detailed beam work, custom lighting and the coveted multi-slider panel doors with immediate access to a covered deck. The expansive open kitchen concept with a beautiful oversized island, perfect for entertaining, fabulous Jennair appliances, and an attached sunny and cheerful dining room with a built-in bar with a beverage fridge. Concluding the main floor is a secluded and spacious owner's suite designed with an expansive walk-in closet and gorgeous views of the Rocky Mountains that is complete with an attached laundry room and stunning master bathroom featuring dual vanities, oversized dual headed steam shower, free standing tub, back lit mirrors and more.

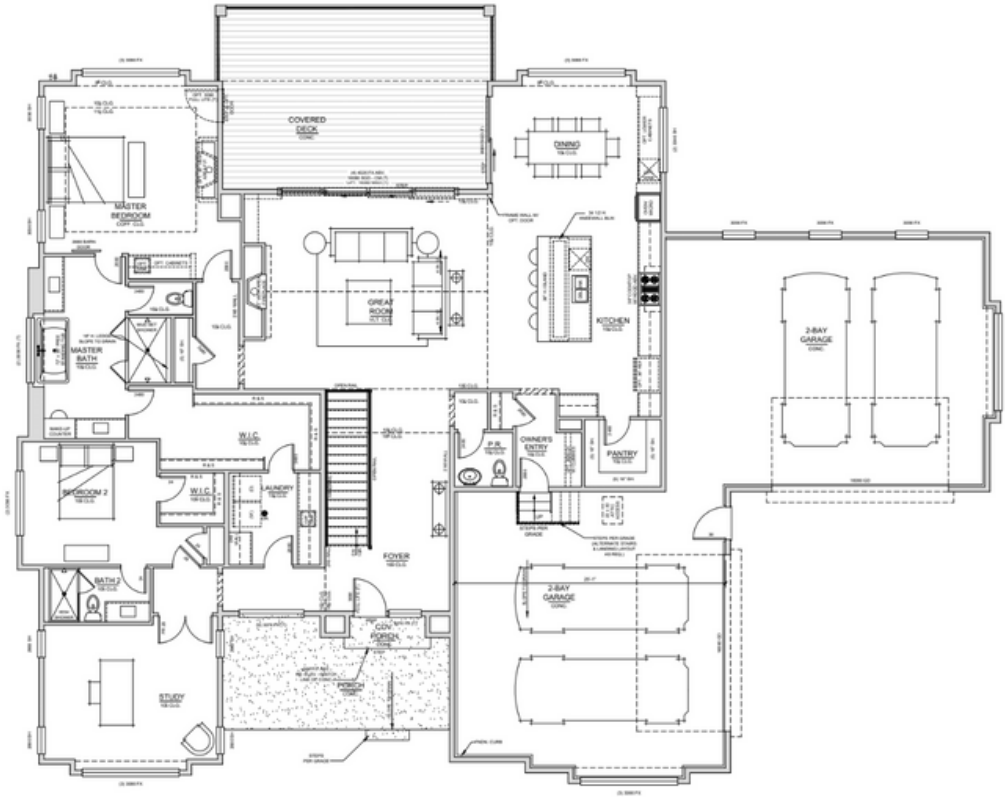
Entering into the lower level with 1,490 finished sqft, there is an expansive family and recreation room that has direct access to the walk out basement patio with a fabulous level yard with expansive mountain views. This lower level space also features a walkup bar with an ice maker, under counter beverage fridge, and flex area that can easily accommodate a second home office, home gym, game room or play space. The 3rd and 4th bedrooms are on the lower level, both are completed with a walk in closet and have hallway access to a full bathroom with dual sinks.

Located on lovely gently sloping lot with a potential outbuilding location with unobstructed views, this home is move-in ready and waiting to welcome you home!

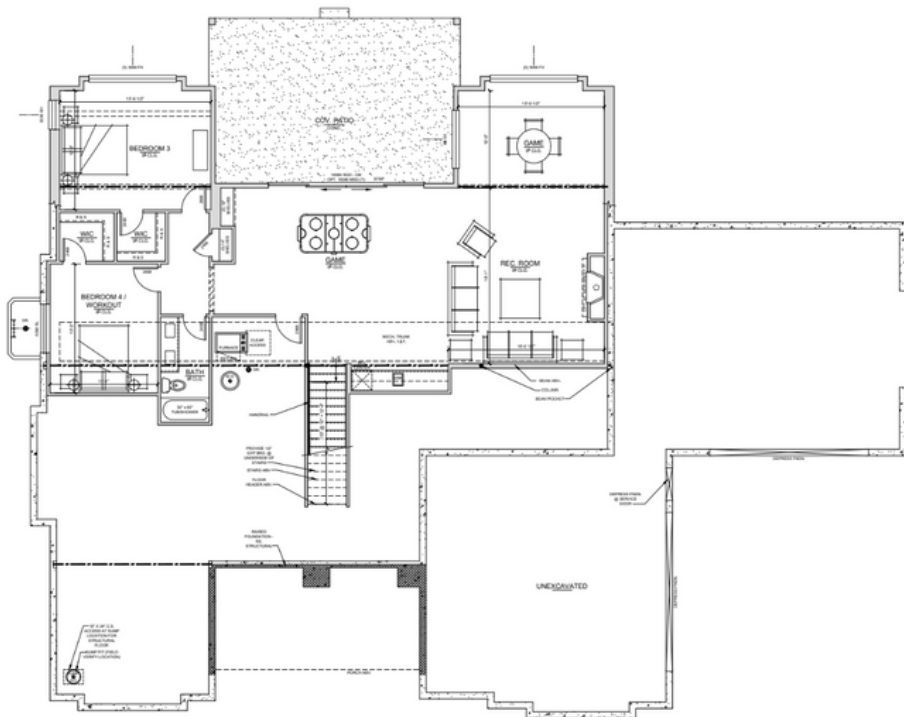


8/17/2023

SHEFFIELD HOMES AT FOX HILL



MAIN LEVEL // 2,700 SQFT FINISHED



LOWER LEVEL // 1,482 SQFT FINISHED