

THE CYPRESS
BY SHEFFIELD HOMES // \$2,499,000

HOMESITE #89

4 BED, 5 BATH // 4,947 FINISHED SQFT

Sheffield Homes has truly outdone themselves with the design of this stunning ranch style contemporary mountain home! Outfitted on a 1.5 acre lot in the sustainable lifestyle Fox Hill Community, this home is the perfect forever home!

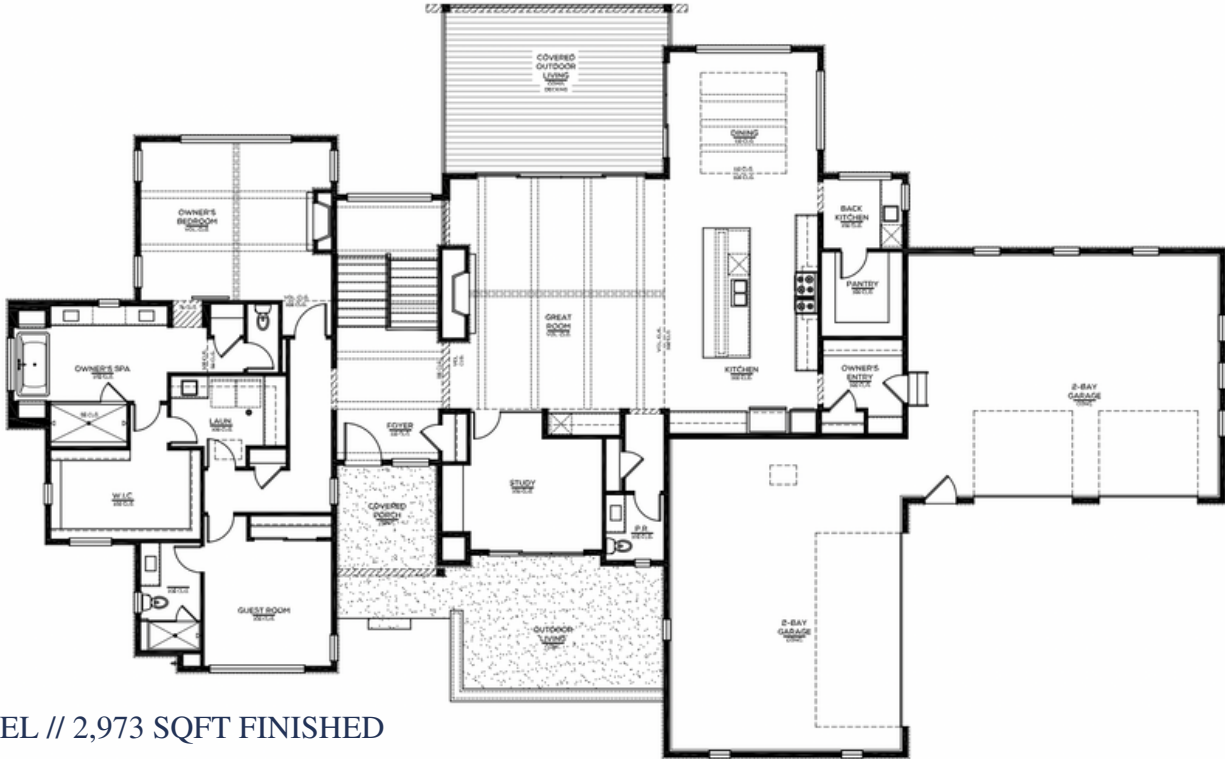
Greeting guests with a GORGEOUS mountain contemporary entrance, this Sheffield Homes home has a beautiful, expansive front porch that enters into a coffered ceiling foyer with incredible stacked windows with panoramic mountain views. The foyer welcomes guests to an exposed-beam great room that is accented by a fireplace feature to center the room. Expansive windows via the exterior entertaining covered deck, natural lighting enters the entire main level of this beautiful mountain-style home! An open-concept kitchen complete with an island, luxurious appliances, a dining room, custom kitchen, butler's pantry with a walk-in pantry provides the entertainers ample amounts of space to prepare! Opposite the kitchen is the primary suite with a vaulted ceiling and a fireplace feature. A barn door exposes the spa retreat bathroom that has a soaking tub, standing shower, and expansive walk-in closet. With direct access to the laundry room, the primary suite is private & spacious. Completing the main floor of The Cypress is the guest en-suite bedroom and dedicated office with custom iron doors and own private patio with incredible natural light!

Entering the lower level of this fantastic mountain style home, the stunning exposed beam coffered ceiling in the recreation room and game room accent the natural lighting of this walk-out lower level that also features a luxurious and spacious wet bar and wine room. Completing the lower level are two bedrooms, two bathrooms and game room. Finishing our tour, this Sheffield Homes custom home provides an ample amount of unfinished storage room.

Fox Hill provides 1G of fiber optic technology and a quiet yet luxurious community for the future home owner of this beautiful custom home!



8/17/2023



MAIN LEVEL // 2,973 SQFT FINISHED



LOWER LEVEL // 1,974 SQFT FINISHED