

**THE MONTEREY**  
**HOMESITE # 67**

11229 RUNNING KIT PLACE, FRANKTOWN  
4 BED, 4 BATH // 4,022 FINISHED SQFT

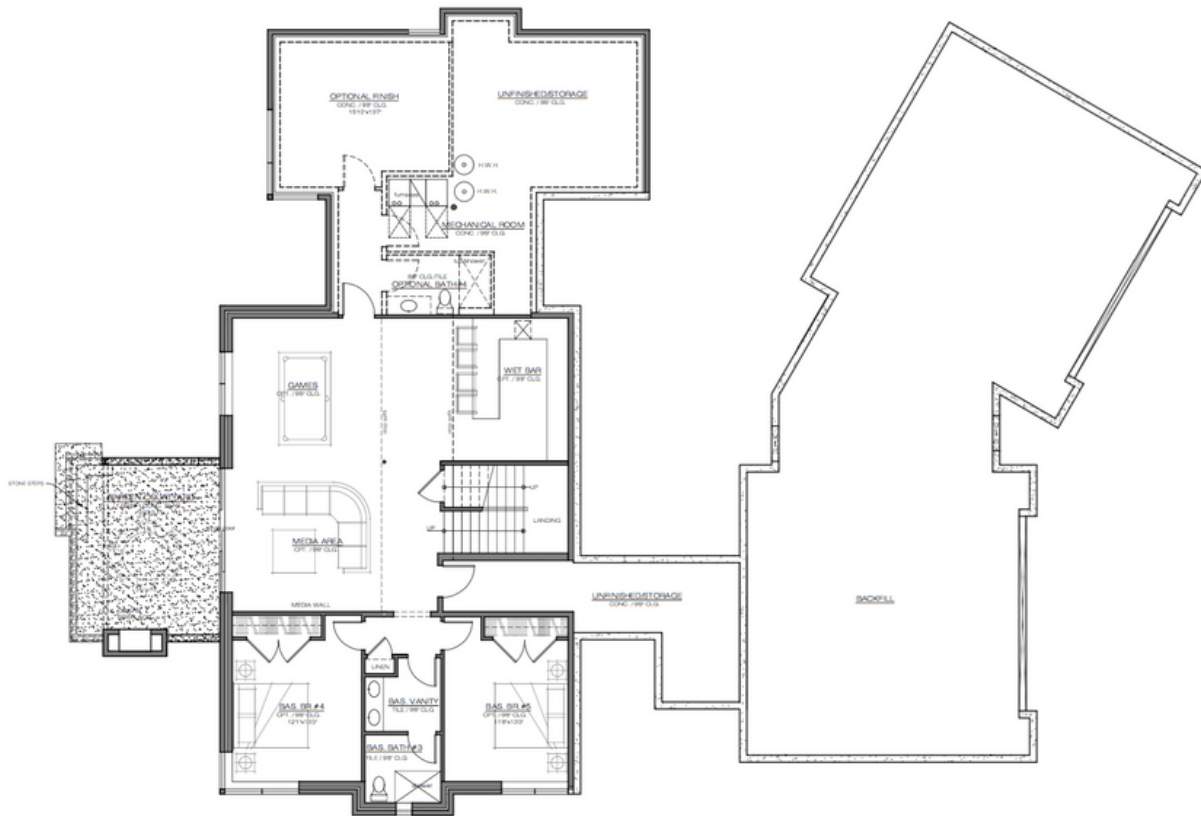
The "Monterey" modern farmhouse design is a Colorado farmhouse design. Outfitted on 1.7 acres, the "Monterey" is positioned to take in the beautiful mountain views of Mt. Evans and Longs Peak via expansive outdoor living spaces with a covered deck and patio. The outdoor living spaces are linked to the spacious 4 car garage along with a bonus garage, perfect for a workshop, which is first to greet any guests after entering the property via a gorgeous curvy driveway.

This 4 bed, 4 bath custom home has an entry that centers you in the home with a designated study off of the great room, a guest suite and an open kitchen concept with a beautiful island, perfect for entertaining, a double oven, and an attached formal dining room with a built-in hutch bar. Concluding the main floor is a secluded and spacious owner's suite designed with 2 expansive walk in closets and gorgeous views of the Rocky Mountains that is complete with an attached laundry room and stunning master bathroom.

A true custom design, The "Monterey" offers a modern, lower level that completes the 4,022 square feet of finished living space. The lower level is complete with two finished bedrooms, with quick access to a bathroom perfect for sharing. After descending the stairs to the walk-out lower level, the home opens to showcase a great room that is perfect for a gaming room, media room, or entertainment room. Attached to this entertainment room is a full size wet bar with ample space to fit barstools for a casual seating area for guests. The "Monterey" offers an extra bedroom and attached bathroom in unfinished square footage in the Garden lower level, if it is so desired. This walk-out lower level is the entertainers dream come true.



MAIN LEVEL // 2,547 SQFT FINISHED



LOWER LEVEL // 1,475 SQFT FINISHED